



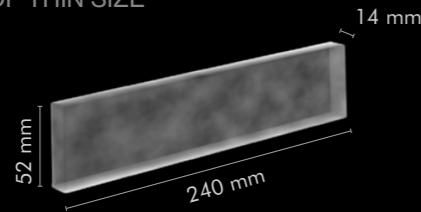
KLINKERRIEMCHEN  
THIN BRICKS



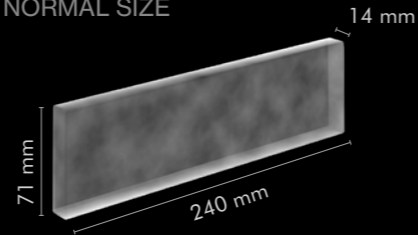
# FORMATE

SIZES OF THIN BRICKS

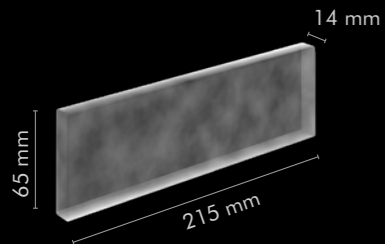
DF DÜNNFORMAT  
DF THIN SIZE



NF NORMALFORMAT  
NF NORMAL SIZE



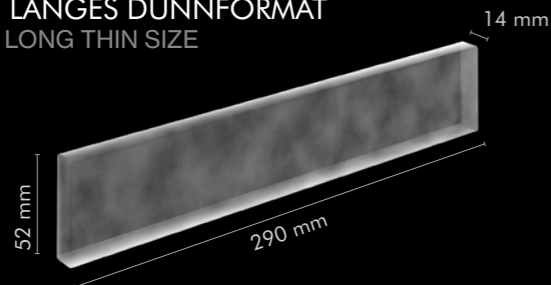
WDF WAALDICKFORMAT  
WDF WAAL THICK SIZE



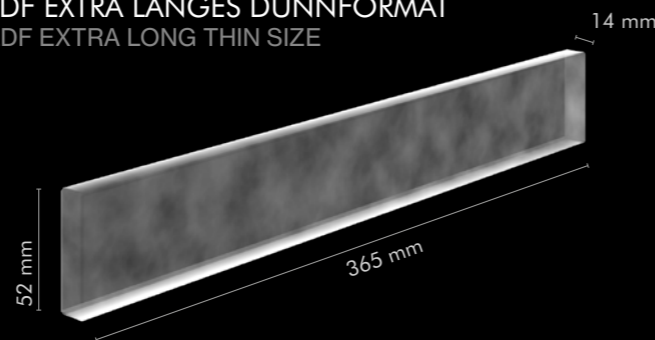
KLINKERRIEMCHEN THIN BRICK	Format Size	Bedarf Stück je m <sup>2</sup> Pieces per sqm
NF	240 x 71 x 14 mm	ca. 48
DF	240 x 52 x 14 mm	ca. 64
WDF	215 x 65 x 14 mm	ca. 60
LDF	290 x 52 x 14 mm	ca. 54
XLDF	365 x 52 x 14 mm	ca. 44

Die KLINKERRIEMCHEN können in den Stärken 9 bis 25mm hergestellt werden. Die Standardstärke unserer KLINKERRIEMCHEN beträgt 14mm. Alle weiteren Stärken auf Anfrage. Die Absprache mit dem KLINKERWERK ist hierbei erforderlich. THIN BRICKS can be manufactured in thicknesses from 9 to 25mm. The standard thickness of our THIN BRICKS is 14mm. All other thicknesses are available on request. Please contact the BRICK FACTORY to make further arrangements.

LDF LANGES DÜNNFORMAT  
LDF LONG THIN SIZE



XLDF EXTRA LANGES DÜNNFORMAT  
XLDF EXTRA LONG THIN SIZE

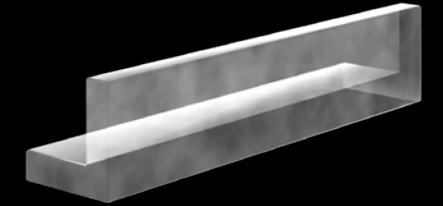
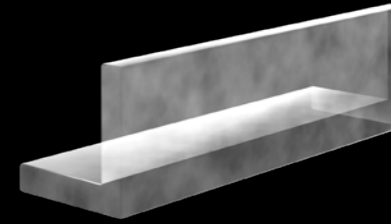


Alle angegebenen Bedarfszahlen beziehen sich auf eine Fugenbreite von 10 bis 12 mm. All stated figures refer to a grouting width of 10-12 mm.

# WINKEL

CORNERS

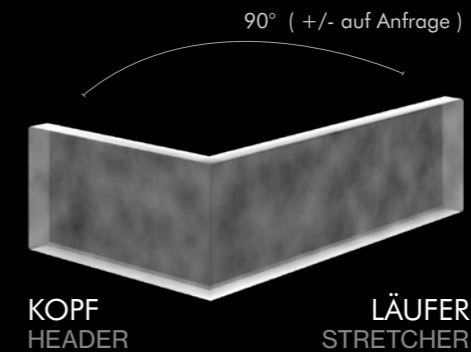
LÄUFERWINKEL  
EDGE CORNERS



Läuferwinkel werden vorwiegend als Stilmittel eingesetzt - z.B. für Stürze in Fensterlaibungen, zum Verkleiden von Sichtkanten im Sockelbereich oder als gleichschenkeliger Läuferwinkel hochkant an Gebäudeecken, um Akzente an der Fassade zu erzielen. Die Produktion richtet sich nach der benötigten Menge für das gesamte Objekt und der jeweiligen Produktlinie.

Edge corners are used mainly as stylistic elements in window lintels and reveals or to clad visible edges in base areas. They can be used as equal-sided corners and laid on edge on building corners to create accents on the facade. Production depends on the amount required for the building and the desired product collection.

WINKELRIEMCHEN  
THIN BRICK CORNERS



KOPF  
HEADER

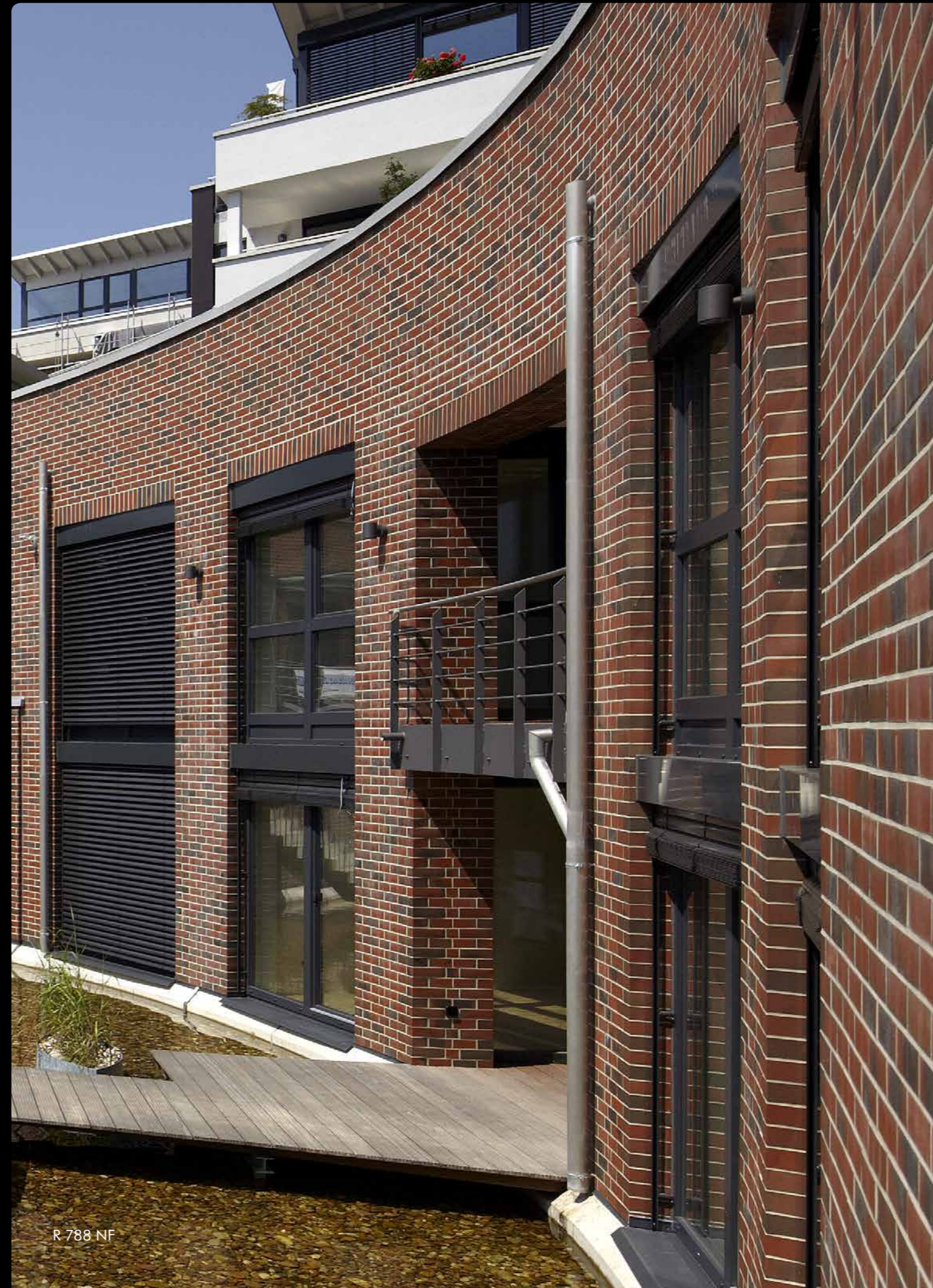
LÄUFER  
STRETCHER

LÄUFER entsprechend dem Format  
STRETCHER according to size

KOPF HEADER	Format Size	Bedarf pro lfm. Pieces per RMT
NF	115 mm	ca. 12
DF	115 mm	ca. 16
WDF	102 mm	ca. 13

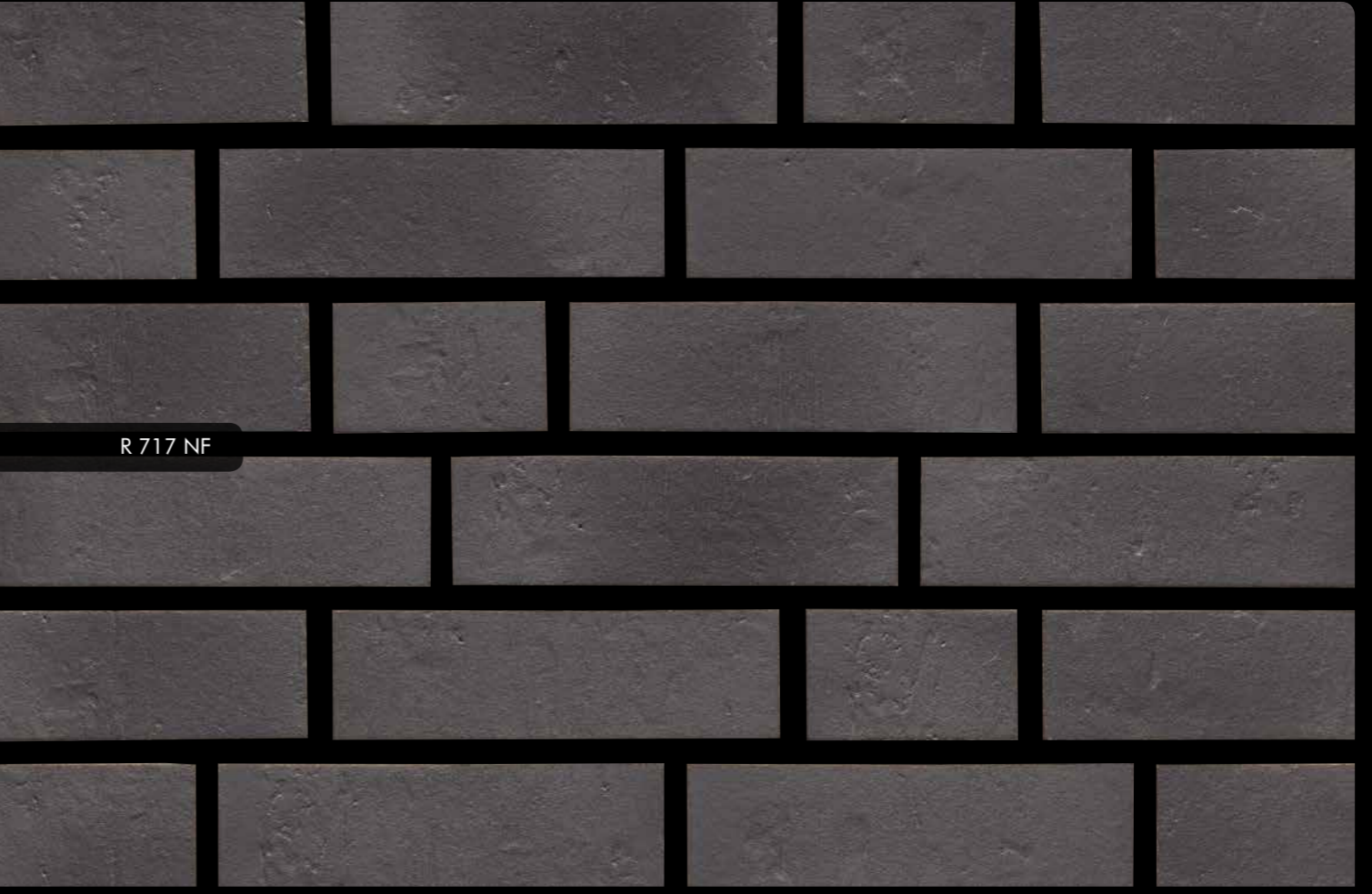
Alle angegebenen Bedarfszahlen beziehen sich auf eine Fugenbreite von 10 bis 12 mm. All stated figures refer to a grouting width of 10-12 mm.

# ACCUDO

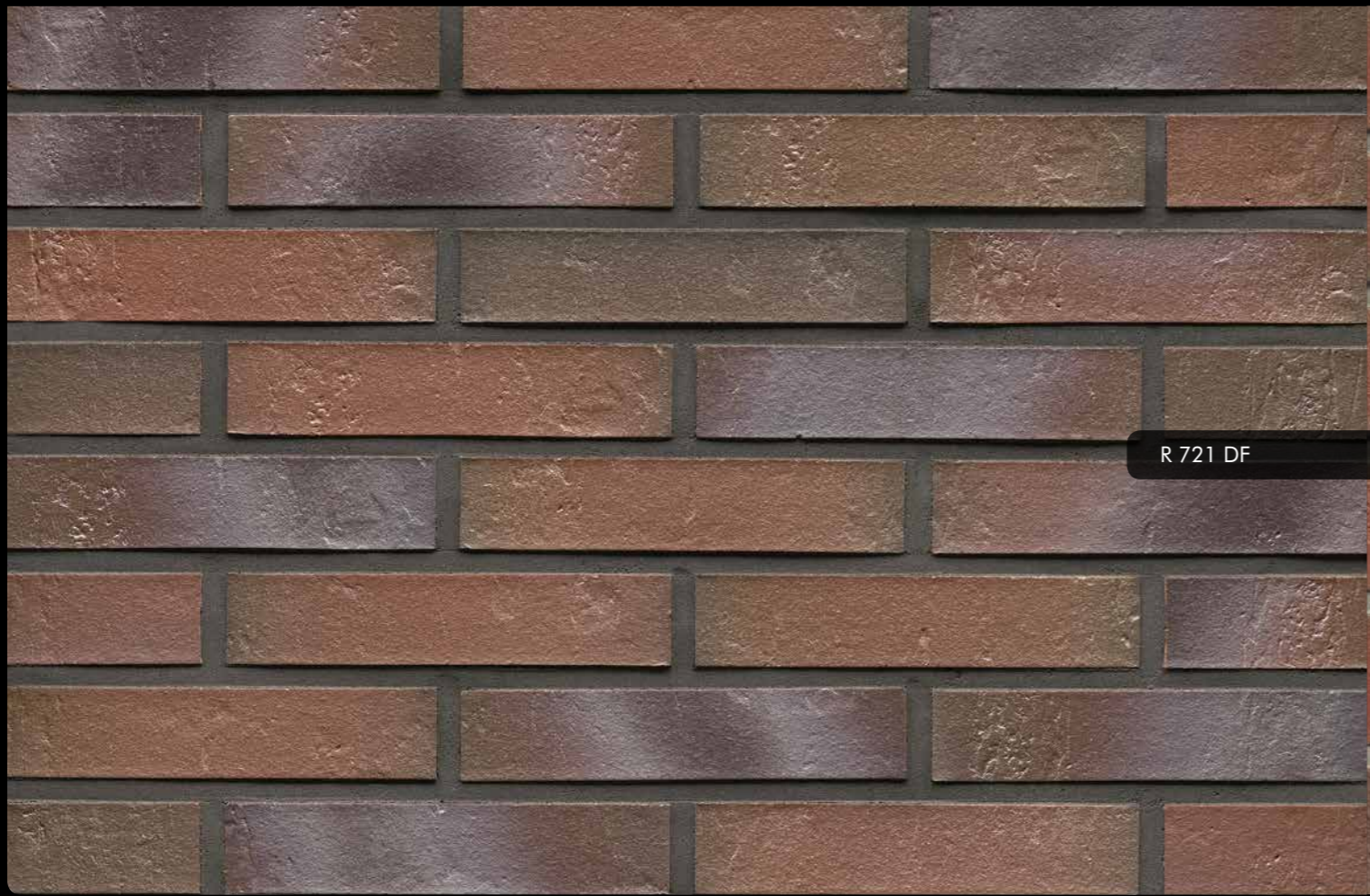




R 720 DF



R 717 NF



R 721 DF

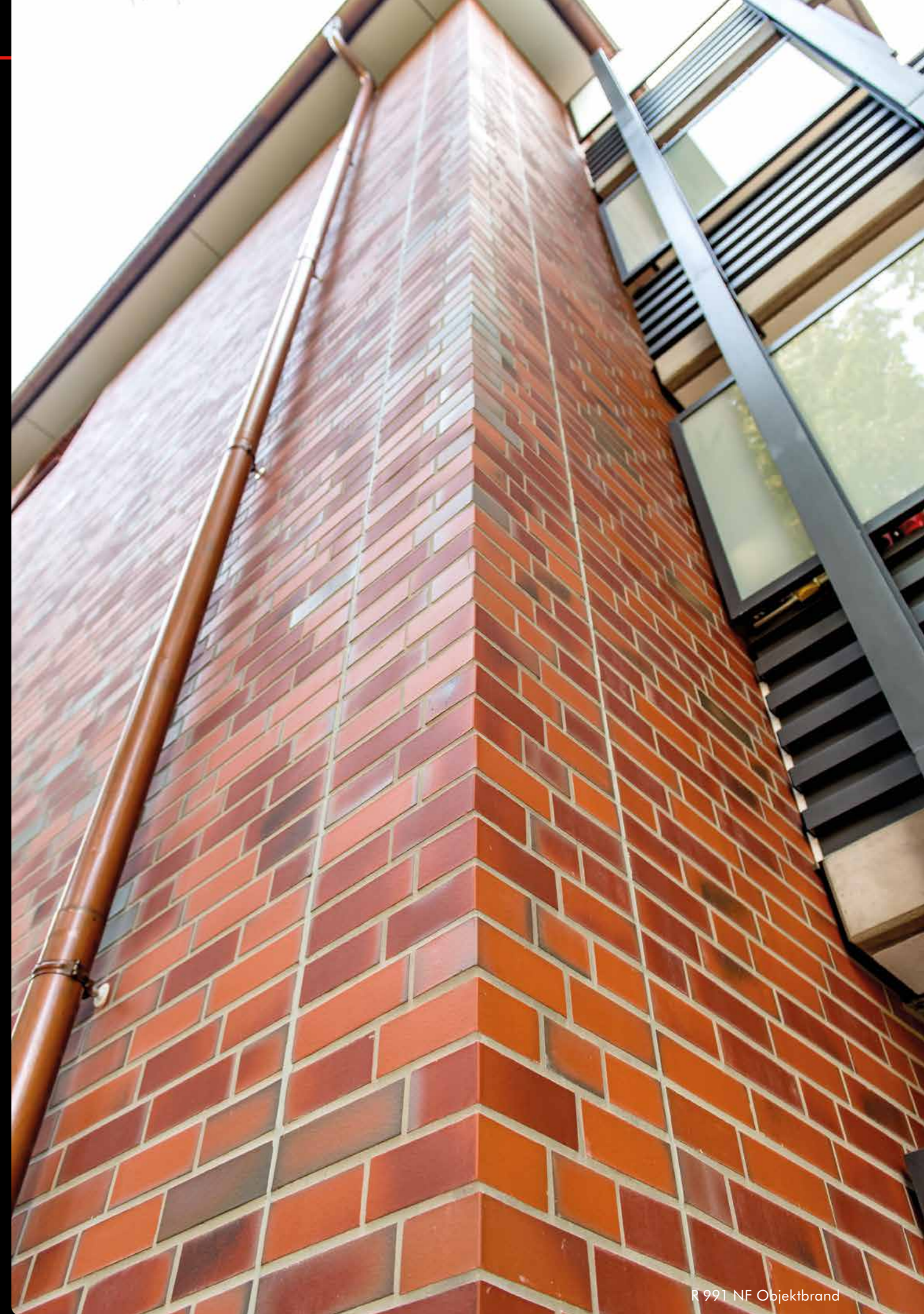
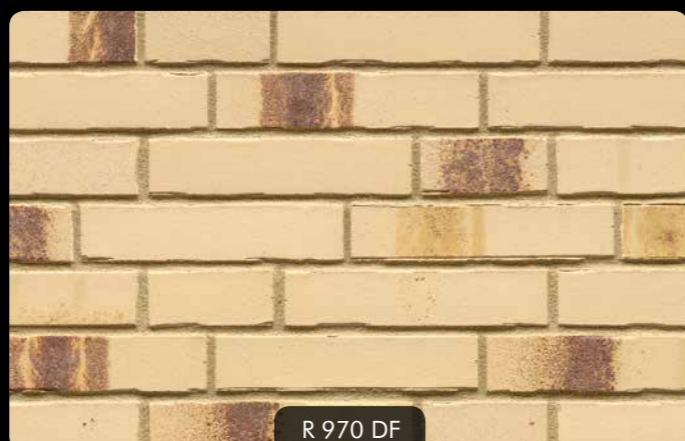


R 716 NF



R 740 NF

# BACCO



Die Abbildungen zeigen unverbindliche Durchschnittsmuster.  
The images show non-binding average samples.



# CARBONA



R 560 NF



R 565 DF



R 565 NF



R 564 DF



R 564 NF



R 567 NF



R 561 NF



R 563 NF



R 560 NF

Die Abbildungen zeigen unverbindliche Durchschnittsmuster.  
The images show non-binding average samples.





R 565 DF

R 565 NF

R 564 DF

R 564 NF

# CLASSIC



R 700 DF



R 740 NF



R 500 NF



R 500 NF



R 540 NF



R 550 NF



R 535 NF



R 343 NF



R 303 LDF



R 303 DF



R 303 NF



R 335 NF



R 307 DF



R 307 NF



R 436 NF



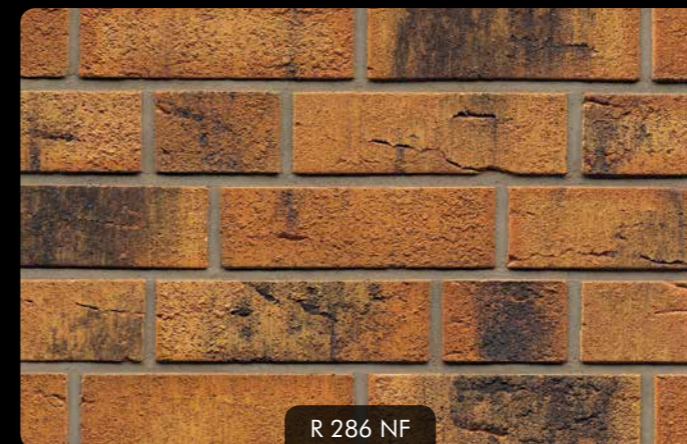
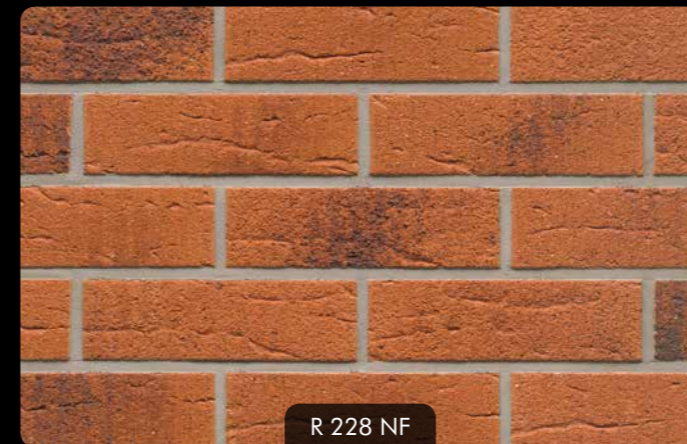
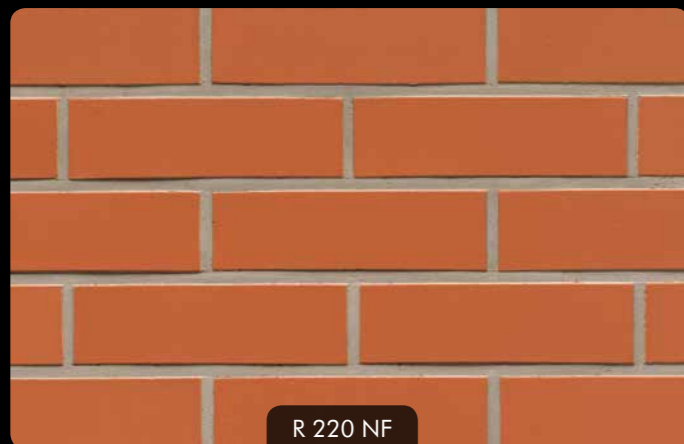
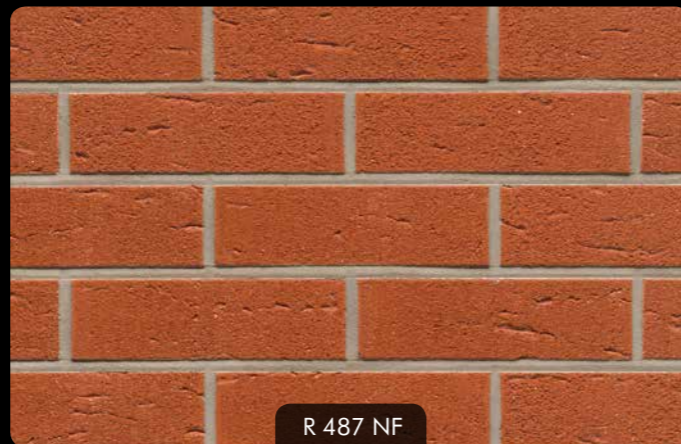
R 332 NF

Die Abbildungen zeigen unverbindliche Durchschnittsmuster.  
The images show non-binding average samples.



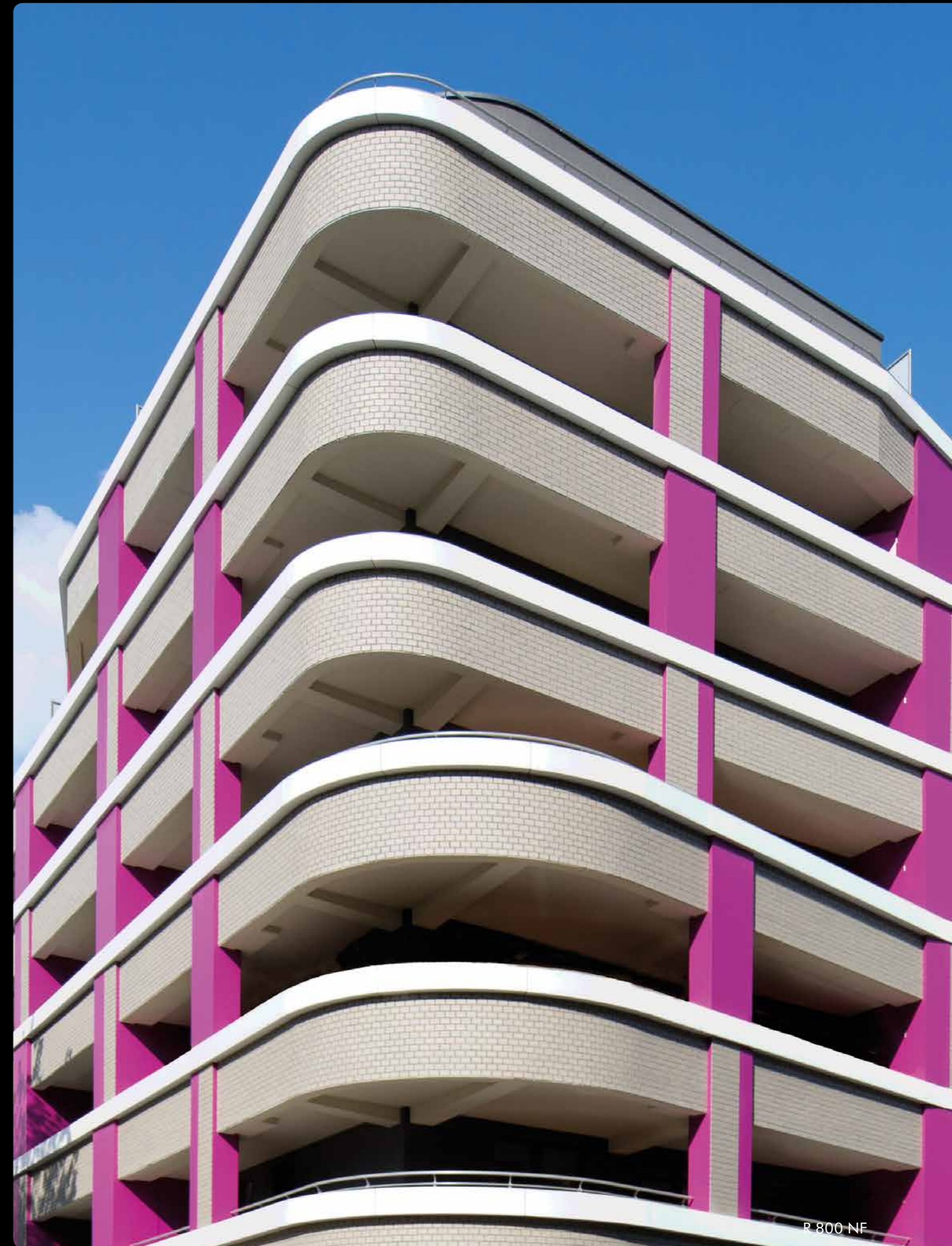
R 917 NF

# CLASSIC



Die Abbildungen zeigen unverbindliche Durchschnittsmuster.  
The images show non-binding average samples.

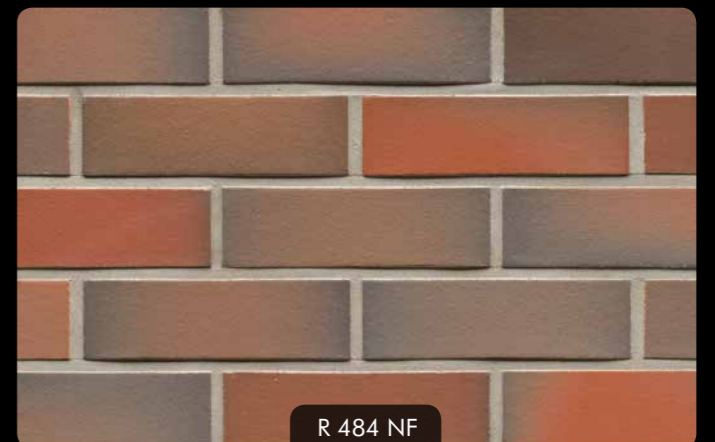
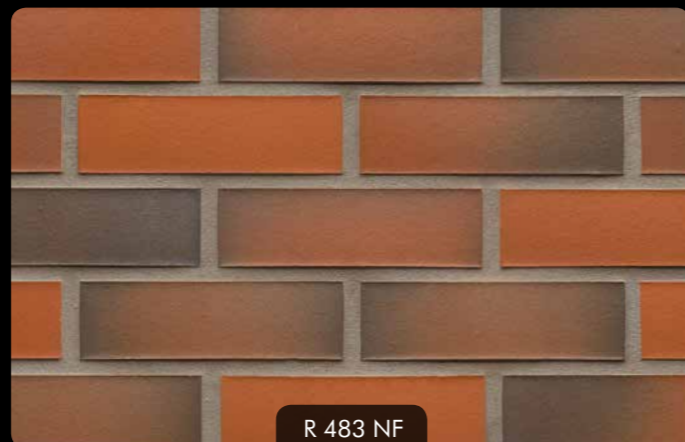
# CLASSIC



Die Abbildungen zeigen unverbindliche Durchschnittsmuster.  
The images show non-binding average samples.



# GALENA



Die Abbildungen zeigen unverbindliche Durchschnittsmuster.  
The images show non-binding average samples.



R 509 NF

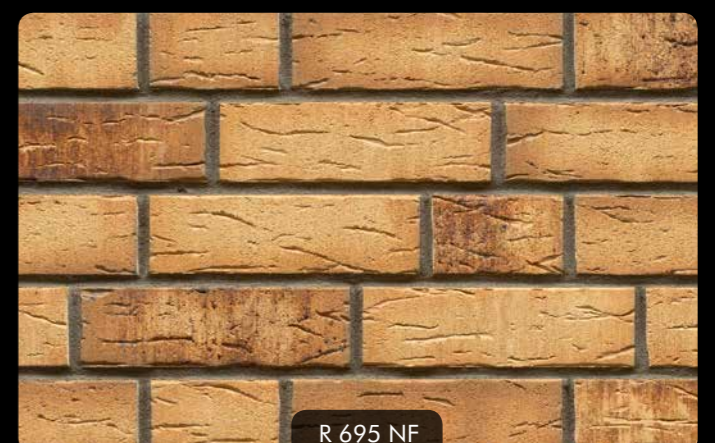
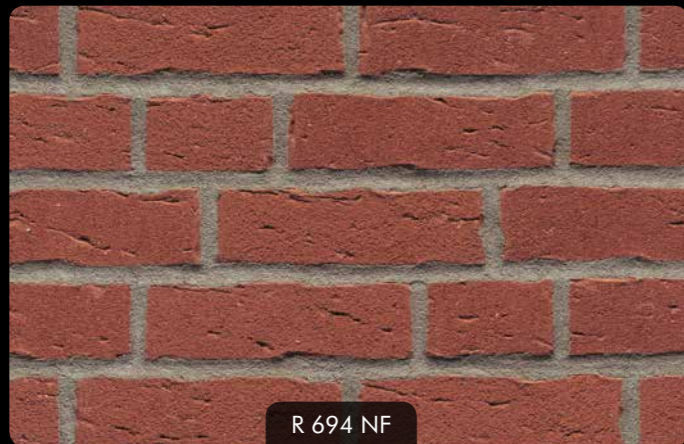
R 518 DF

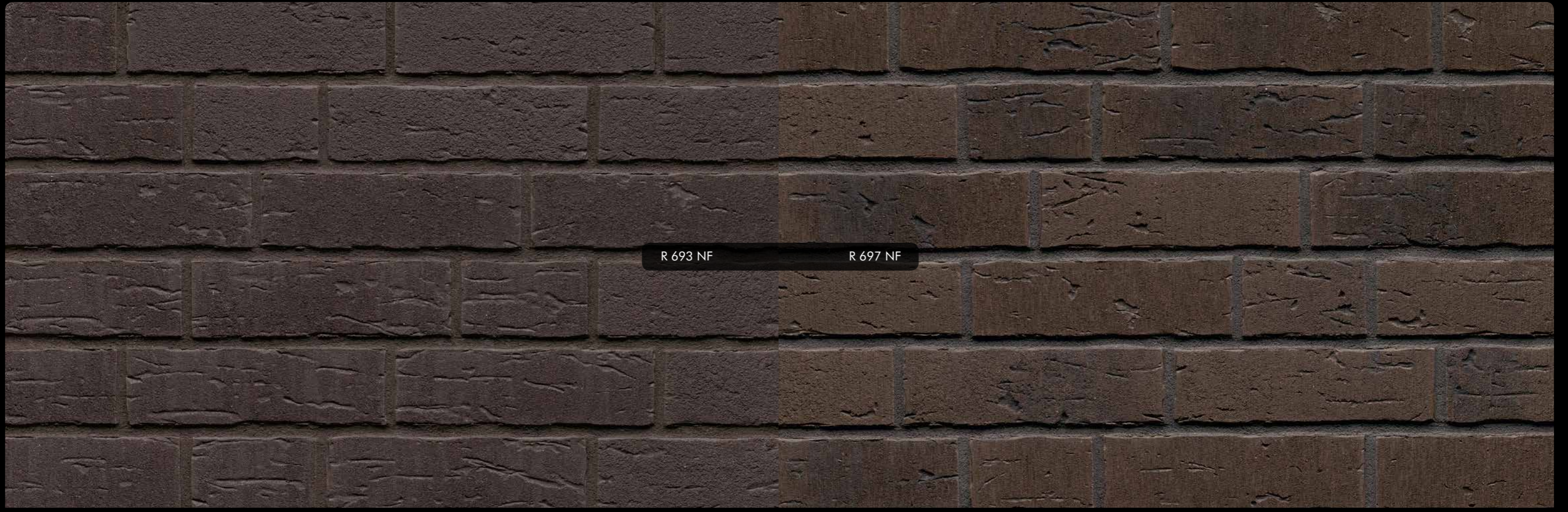


R 384 NF

R 385 NF







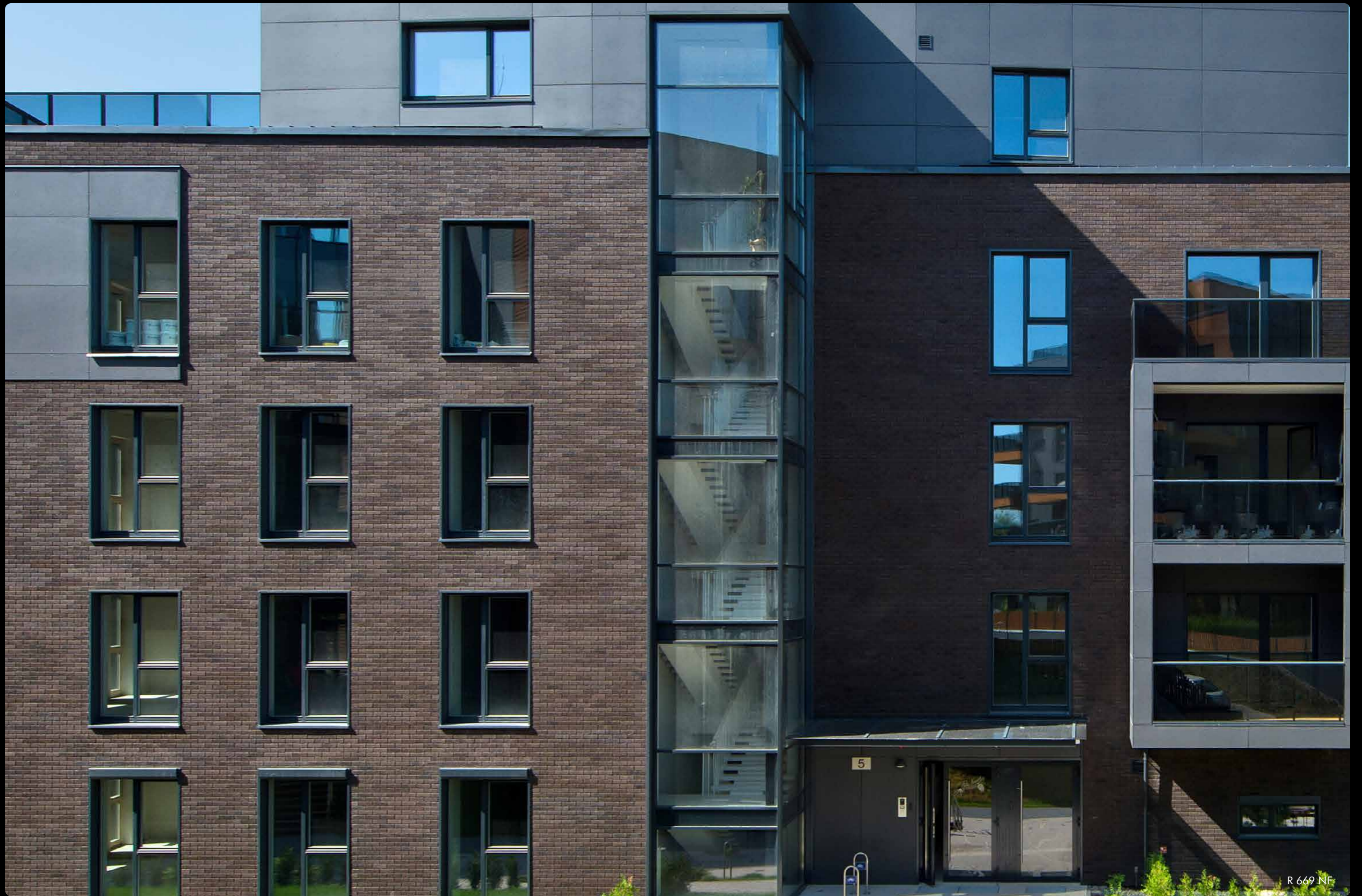
R 693 NF

R 697 NF



R 669 NF

R 663 NF



R 669 NF



R 680 NF



R 682 NF



R 688 NF



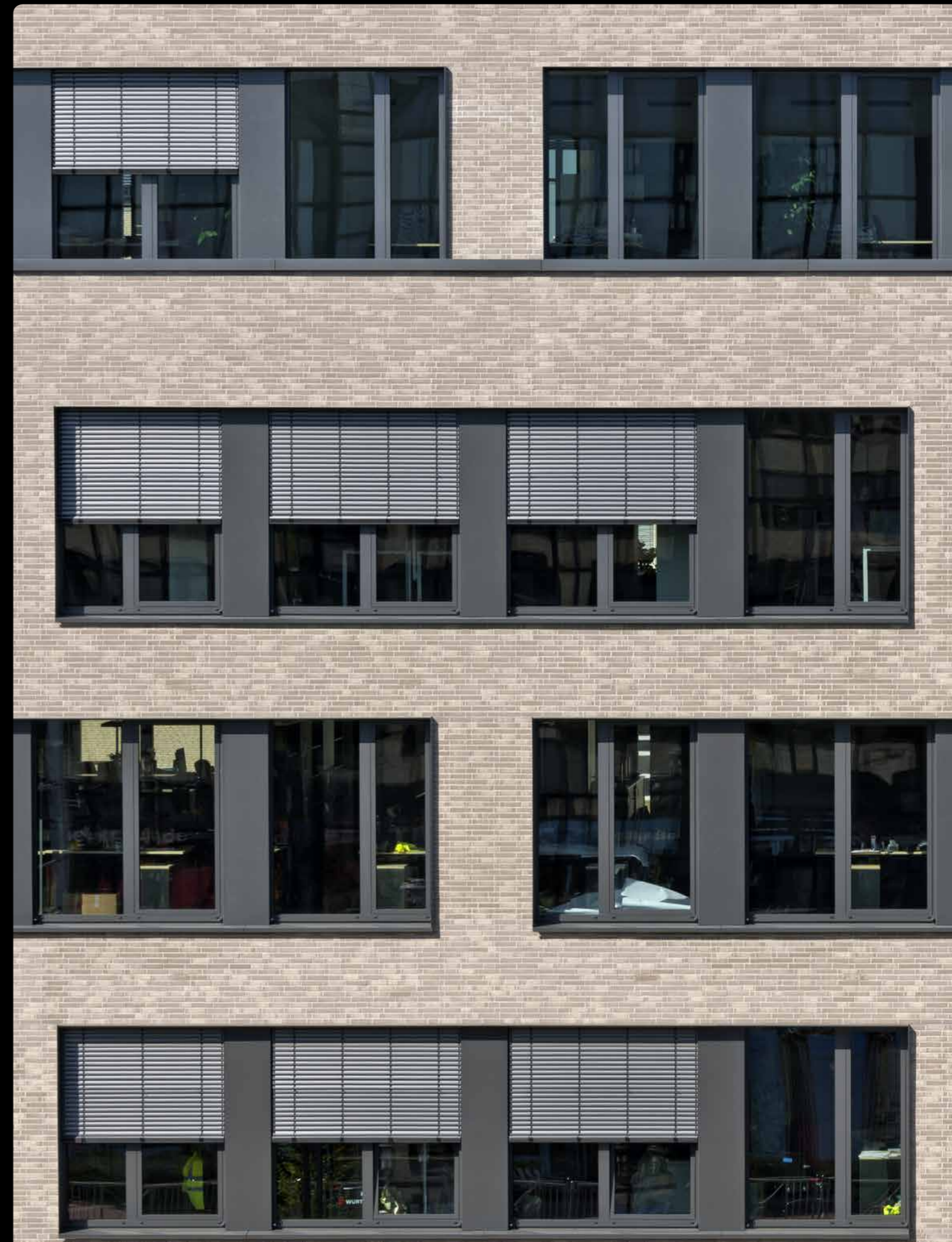
R 696 NF



R 692 NF

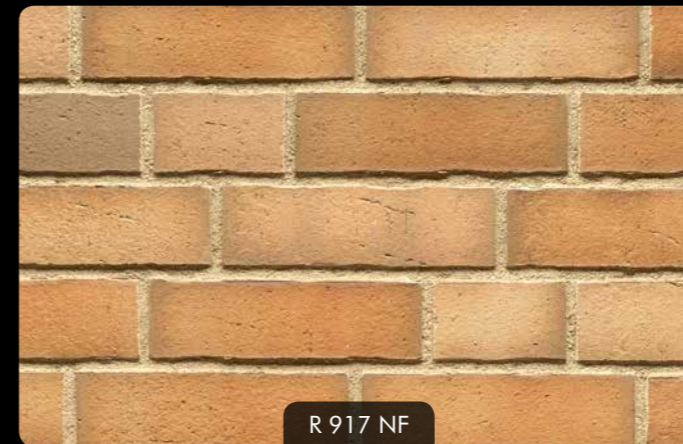


R 691 NF



R 682 NF

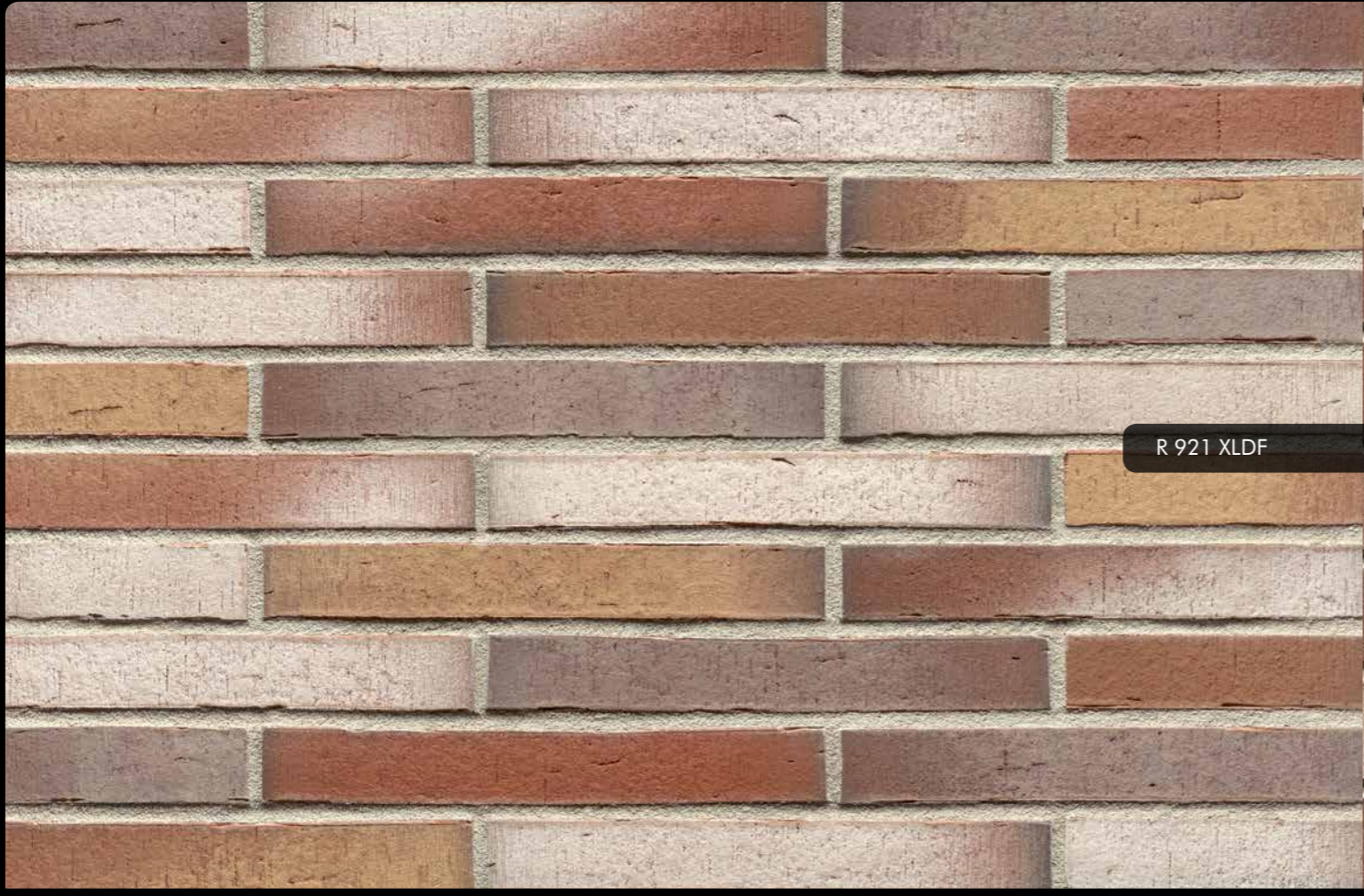




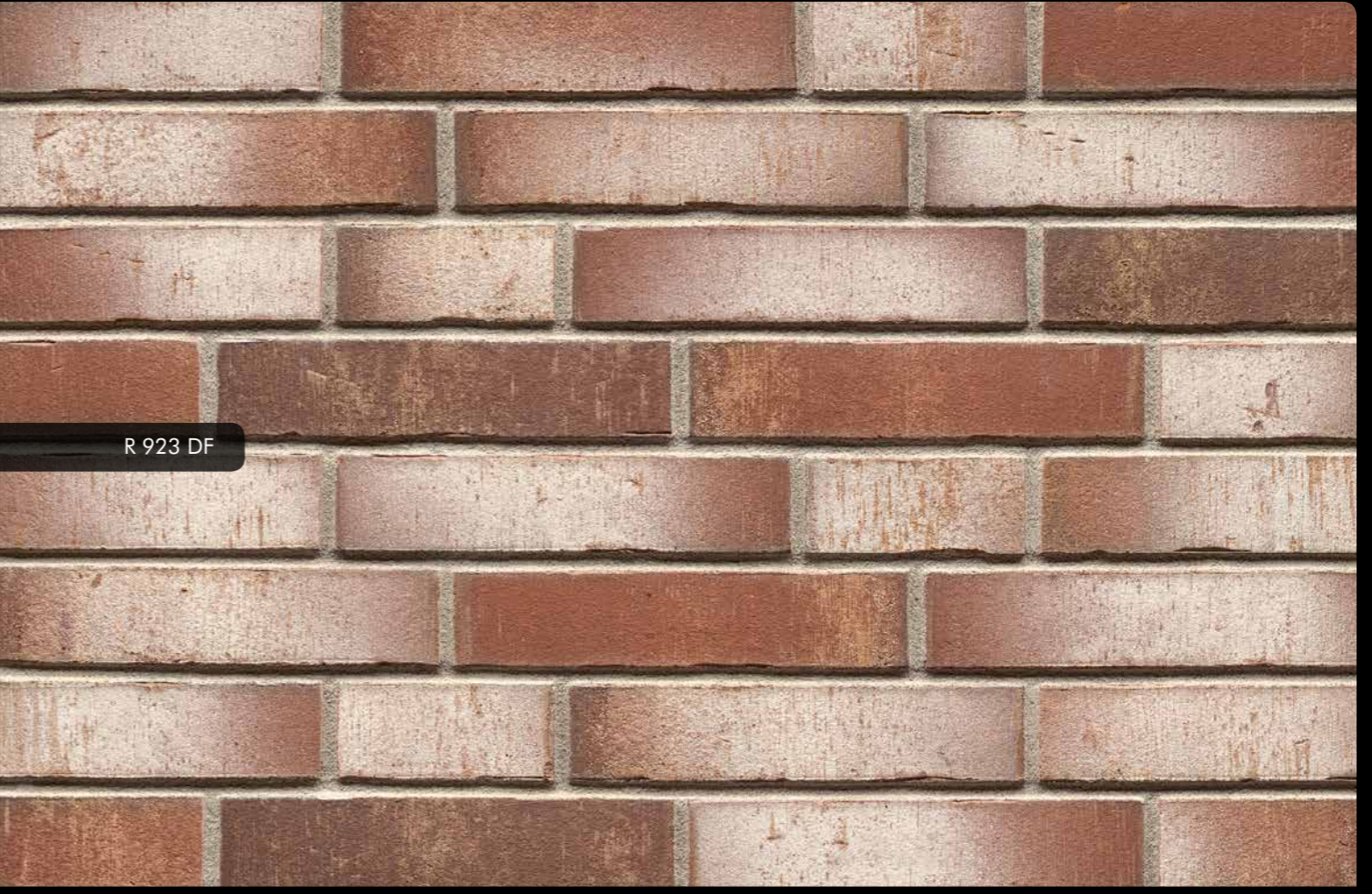
Die Abbildungen zeigen unverbindliche Durchschnittsmuster.  
The images show non-binding average samples.



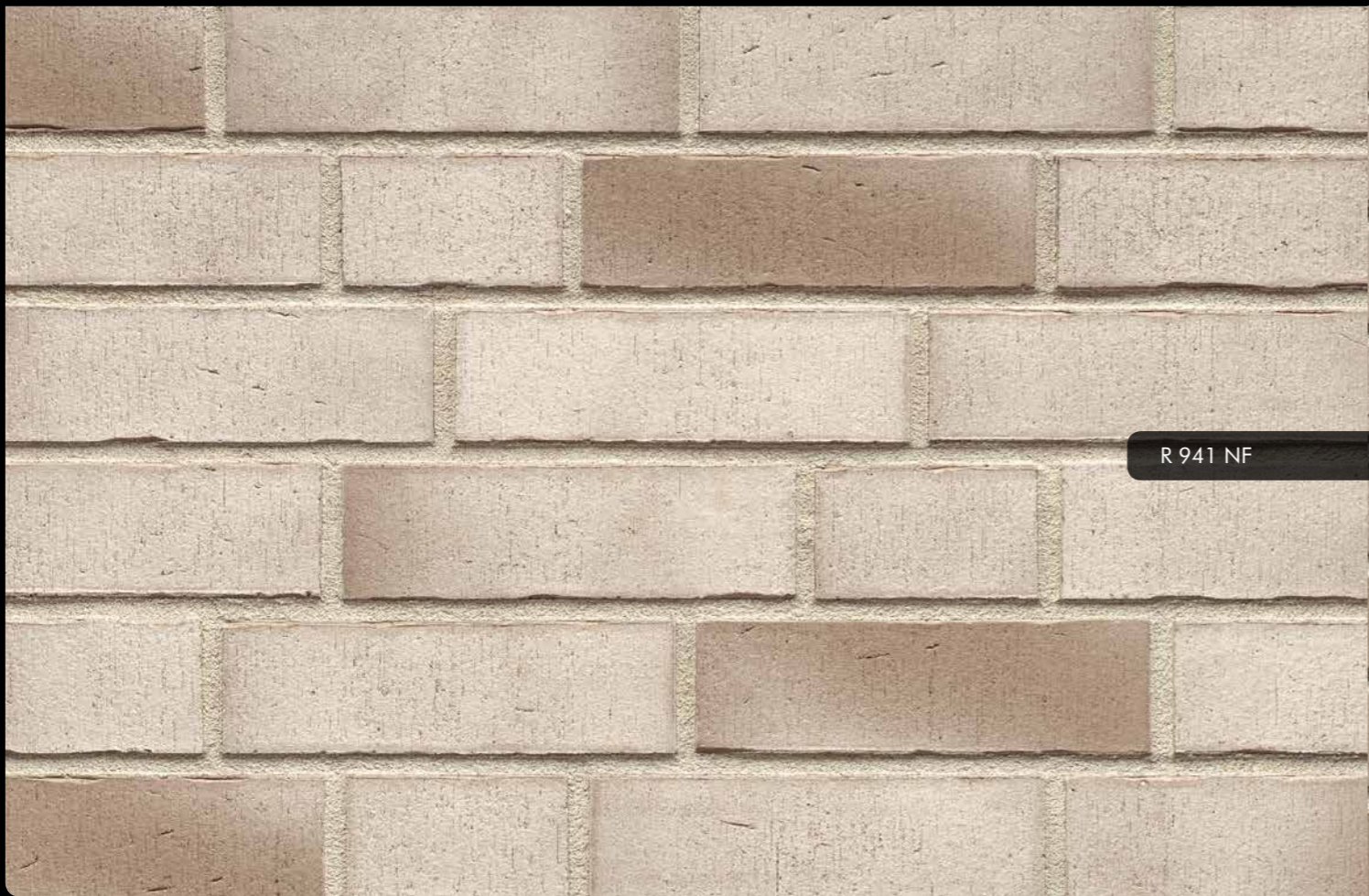
R 918 NF



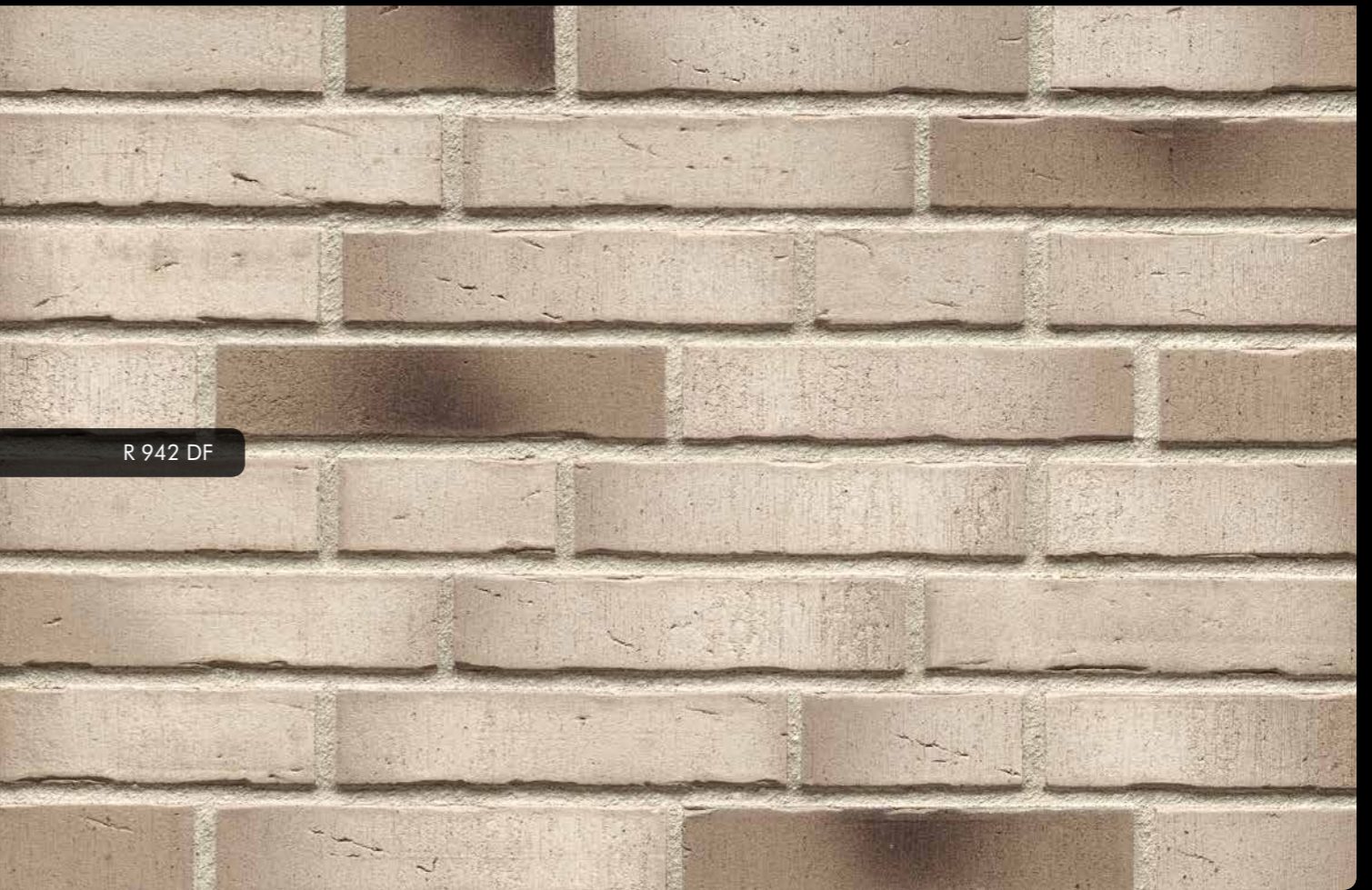
R 921 XLDF



R 923 DF



R 941 NF



R 942 DF





R 941 XLDF

R 942 XLDF

R 943 XLDF

R 944 XLDF



R 757 NF

# VASCU

R 761 NF

R 736 DF

R 737 XLDF

R 738 DF

R 739 DF

R 745 DF

R 747 DF

R 749 NF



R 736 LDF

Die Abbildungen zeigen unverbindliche Durchschnittsmuster.  
The images show non-binding average samples.



R 736 DF

R 737 XLDF



R 749 NF

R 749 NF



R 738 DF

R 739 DF



R 745 DF

R 747 DF



R 744 NF



R 770 NF



R 748 NF



R 768 DF



R 754 NF



R 743 NF



R 743 XLDF



R 750 LDF



R 750 NF



R 752 NF



R 752 XLDF



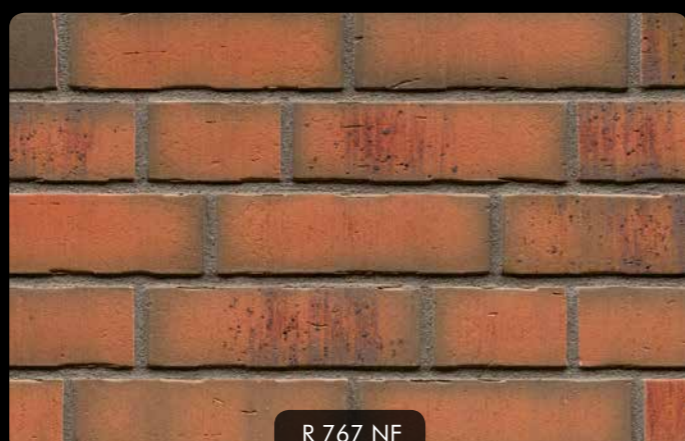
R 746 NF



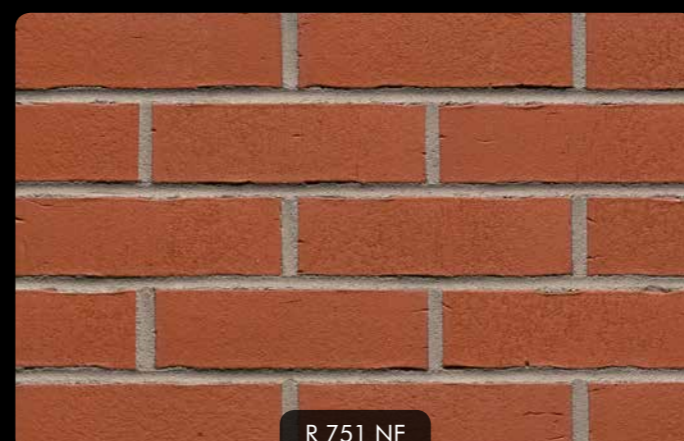
R 769 NF



R 744 NF



R 767 NF

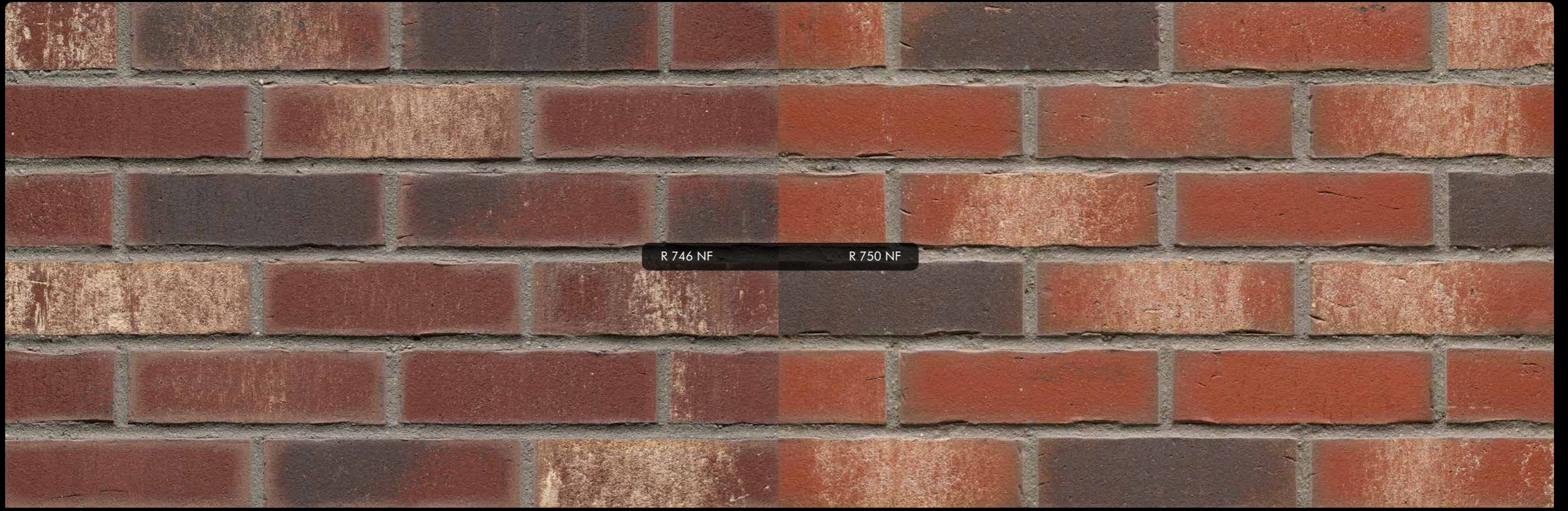


R 751 NF



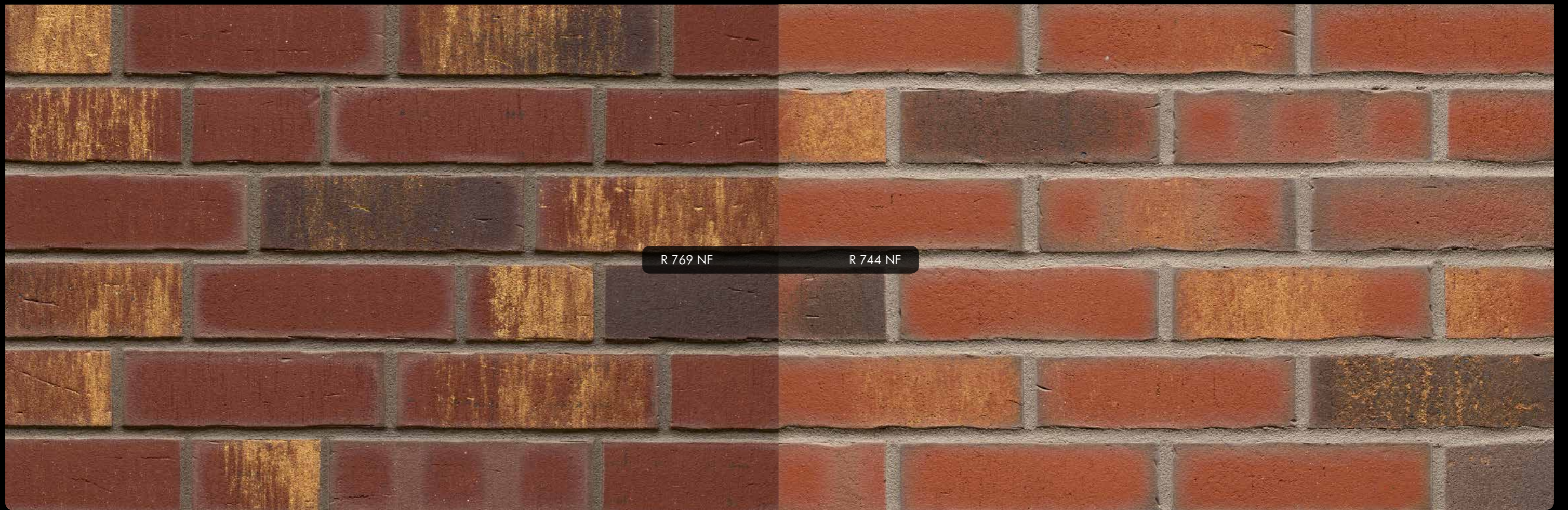
R 759 DF

Die Abbildungen zeigen unverbindliche Durchschnittsmuster.  
The images show non-binding average samples.



R 746 NF

R 750 NF



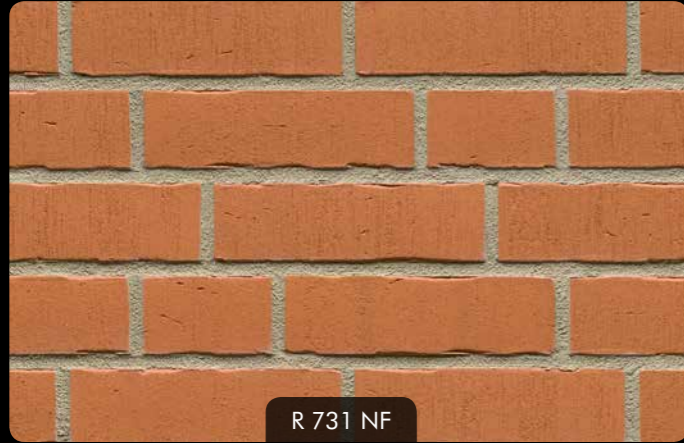
R 769 NF

R 744 NF





R 752 NF



R 731 NF



R 758 NF



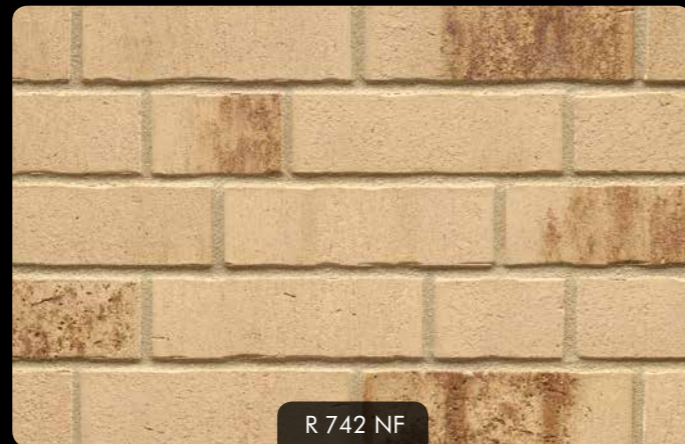
R 734 NF



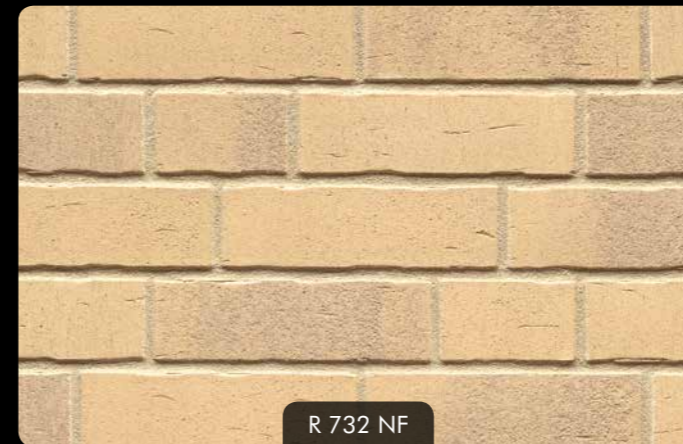
R 766 NF



R 756 NF



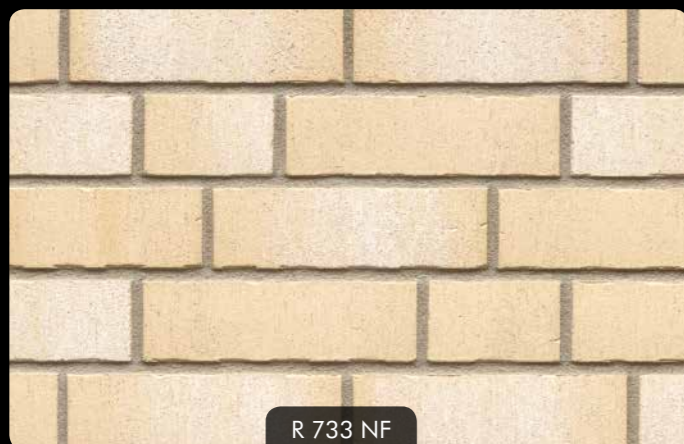
R 742 NF



R 732 NF



R 730 NF



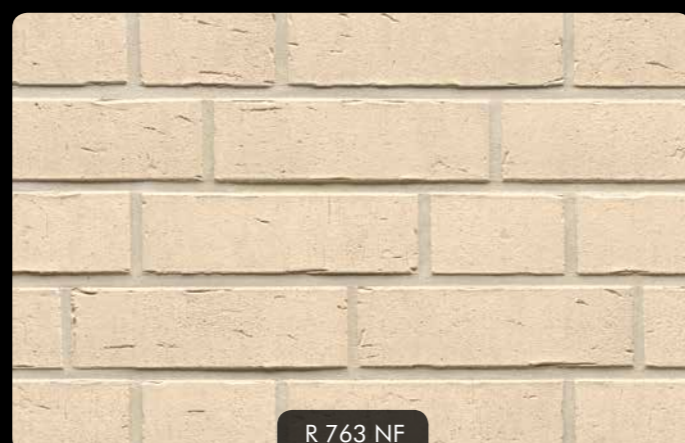
R 733 NF



R 762 NF



R 757 NF



R 763 NF



MIX R 766 DF + R 730 DF

Die Abbildungen zeigen unverbindliche Durchschnittsmuster.  
The images show non-binding average samples.



R 734 NF

R 766 NF



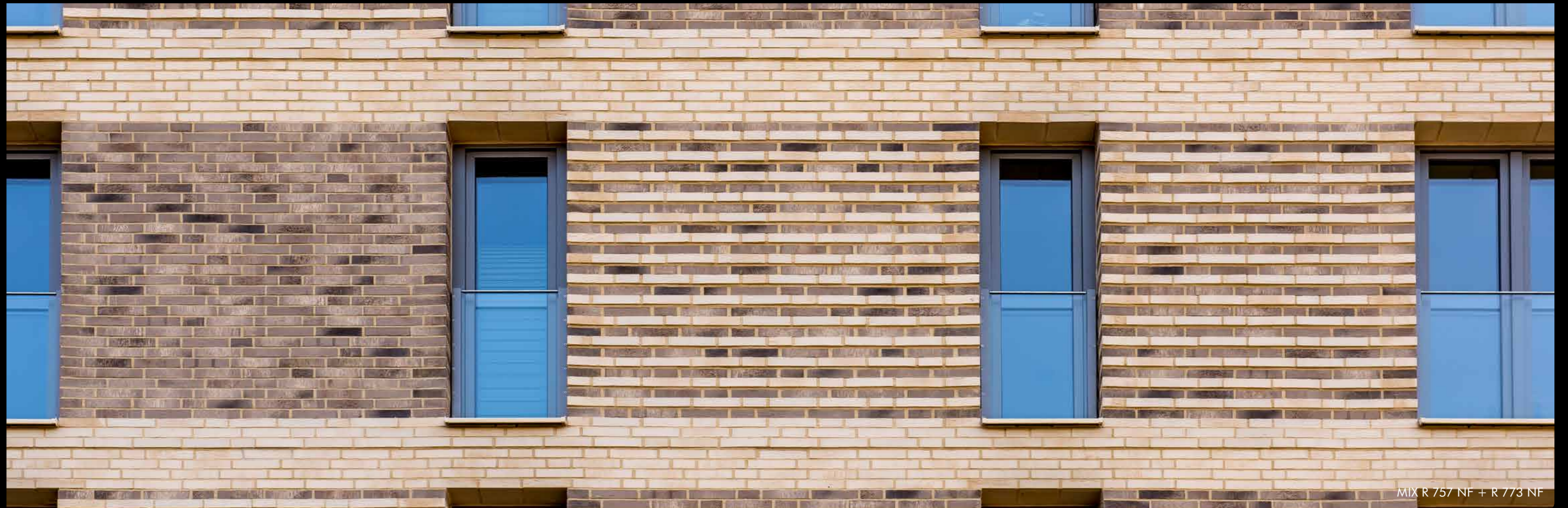
R 762 NF

R 732 NF



R 757 NF

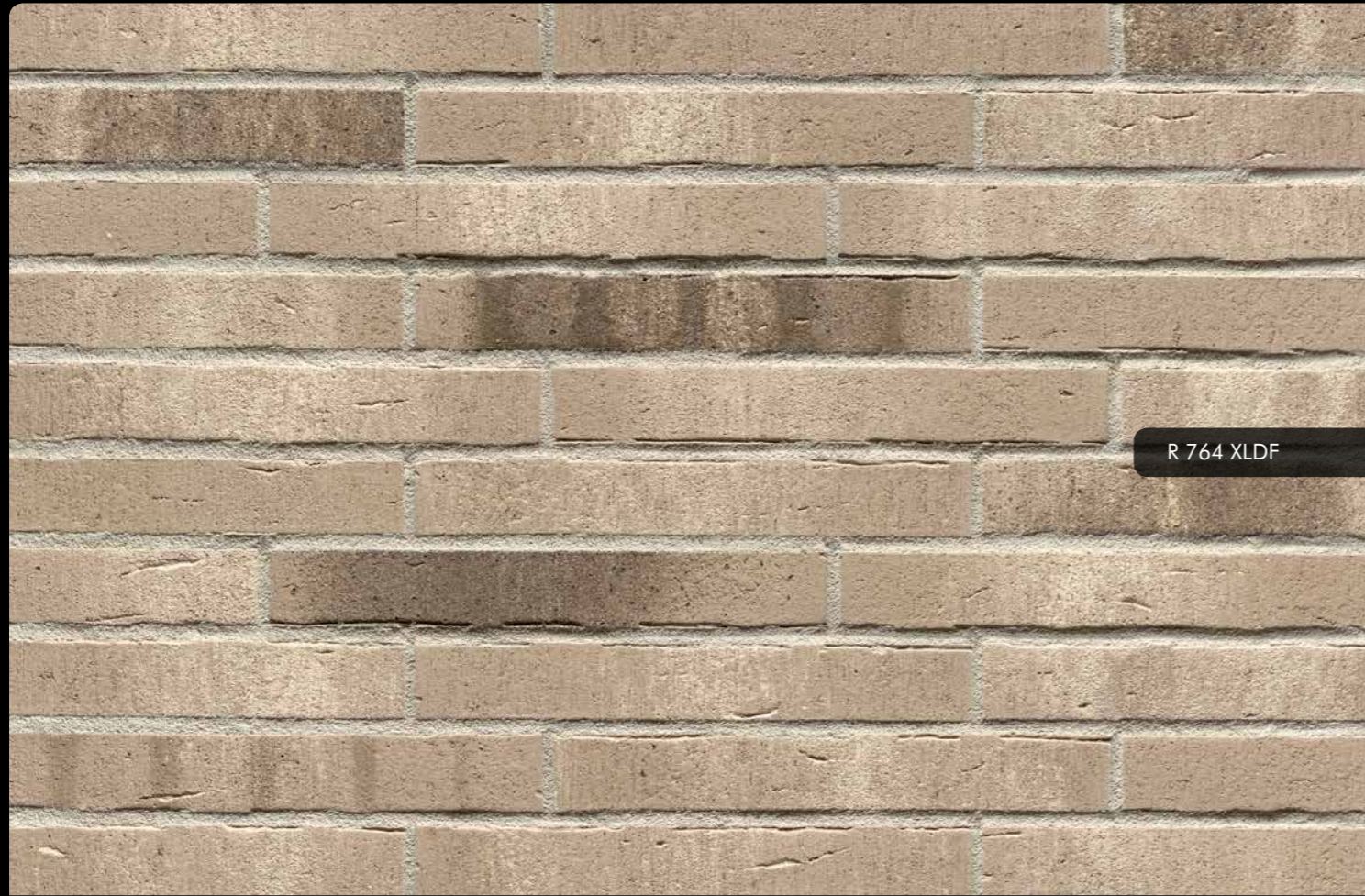
R 763 NF



MIX R 757 NF + R 773 NF



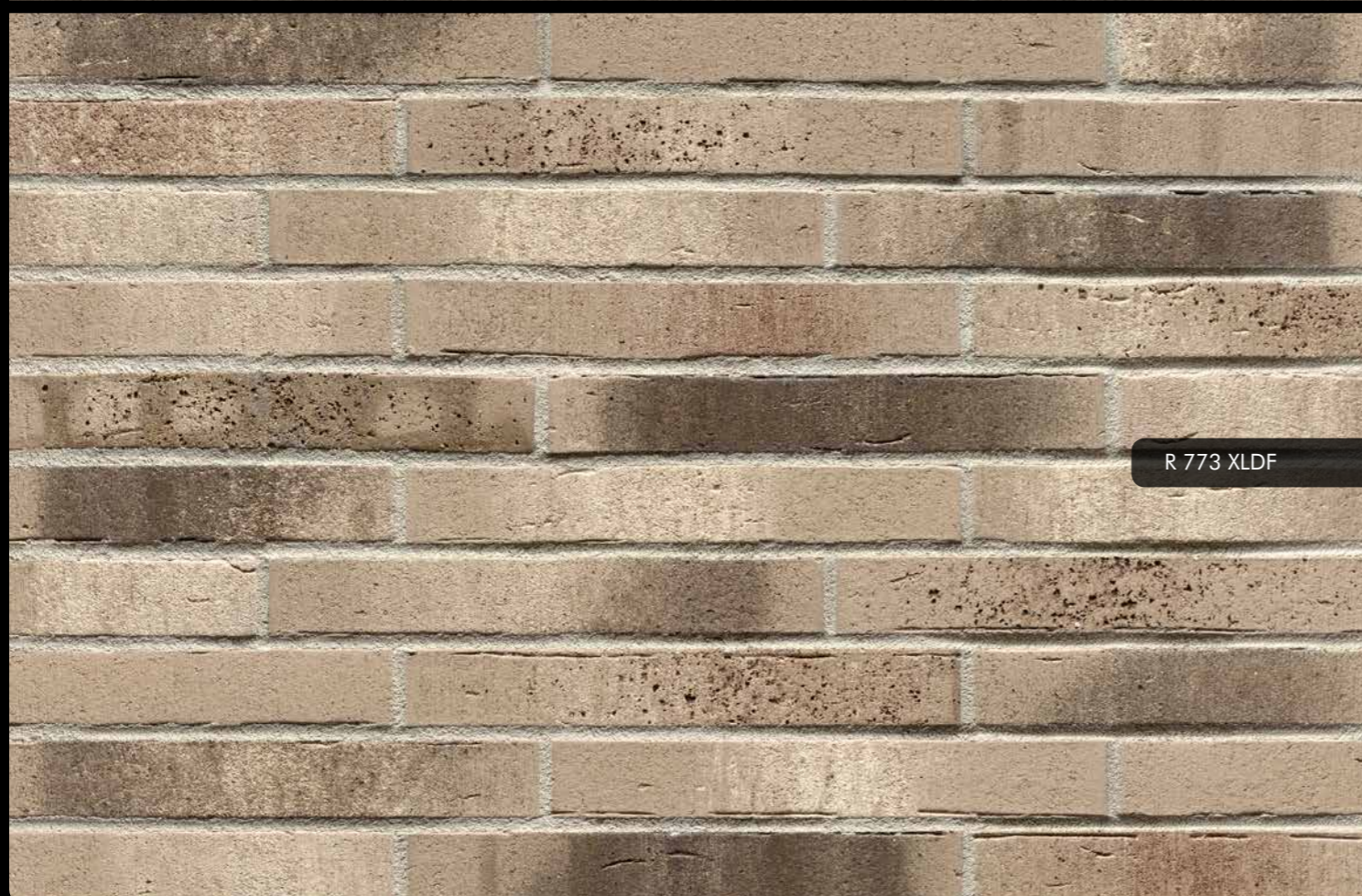
Die Abbildungen zeigen unverbindliche Durchschnittsmuster.  
The images show non-binding average samples.



R 764 XLDF



R 775 NF



R 773 XLDF



R 771 NF



R 764 WDF



R 752 NF

MIX R 762 NF + R 756 NF



R 581 NF



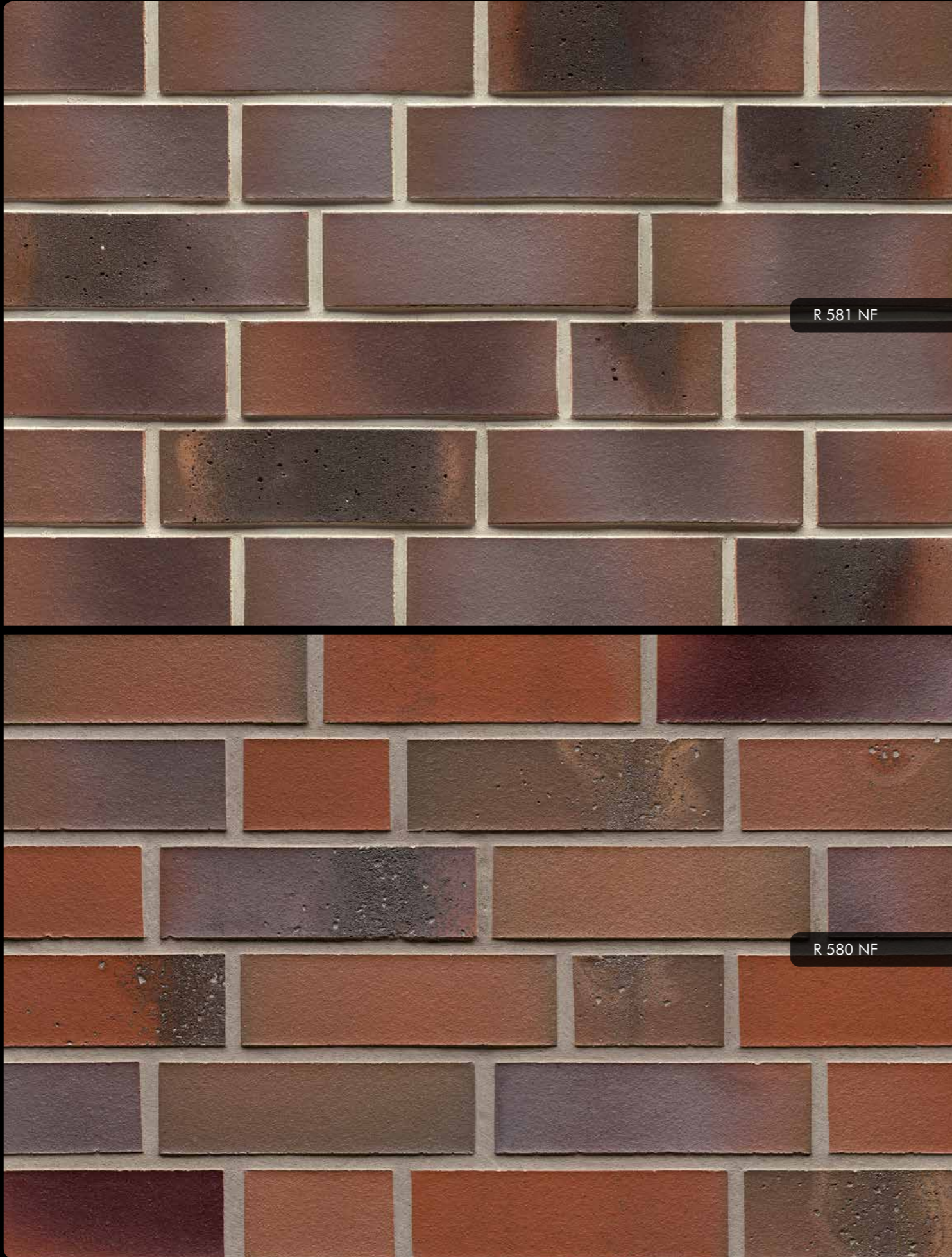
R 580 NF



R 582 NF

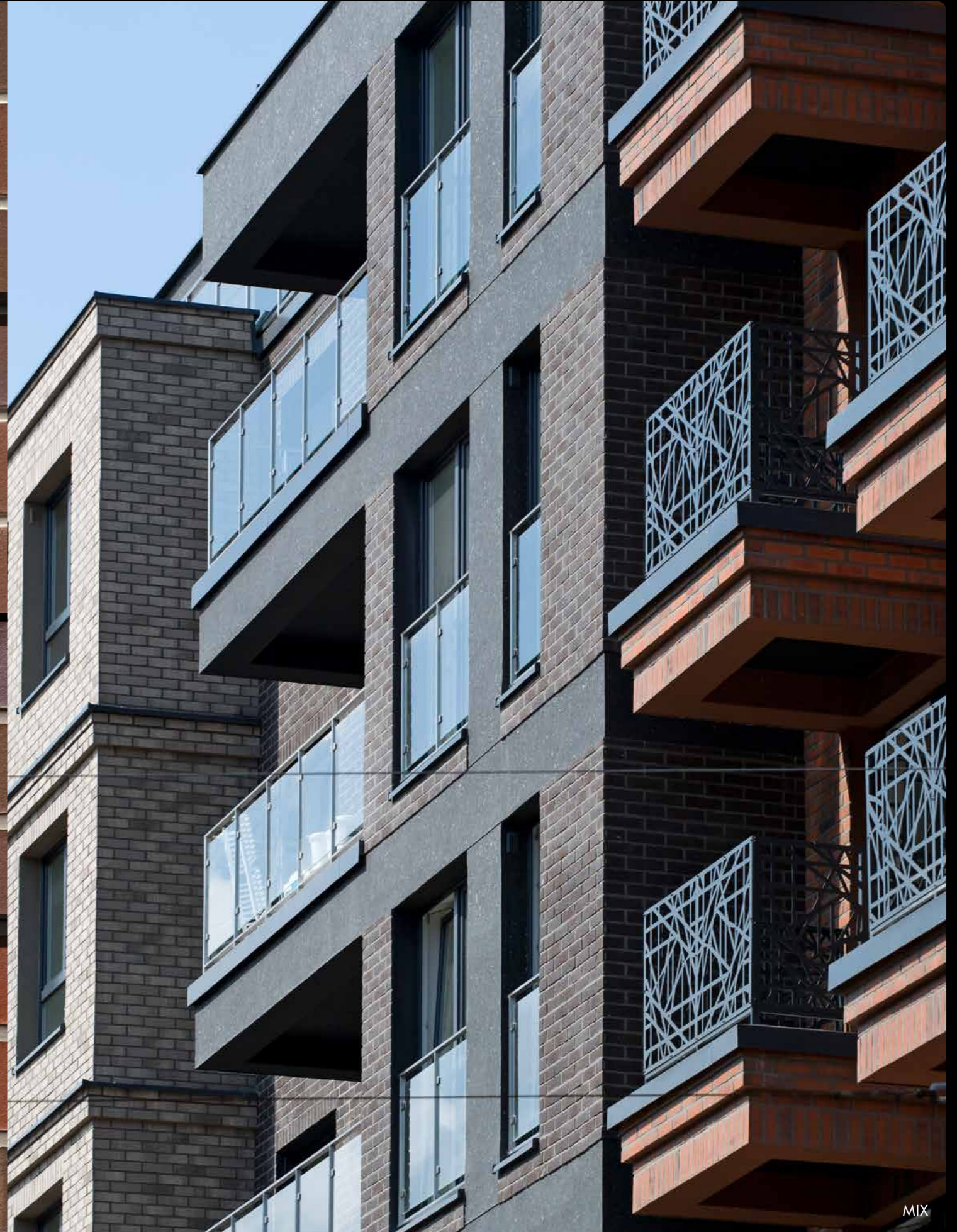
Die Abbildungen zeigen unverbindliche Durchschnittsmuster.  
The images show non-binding average samples.



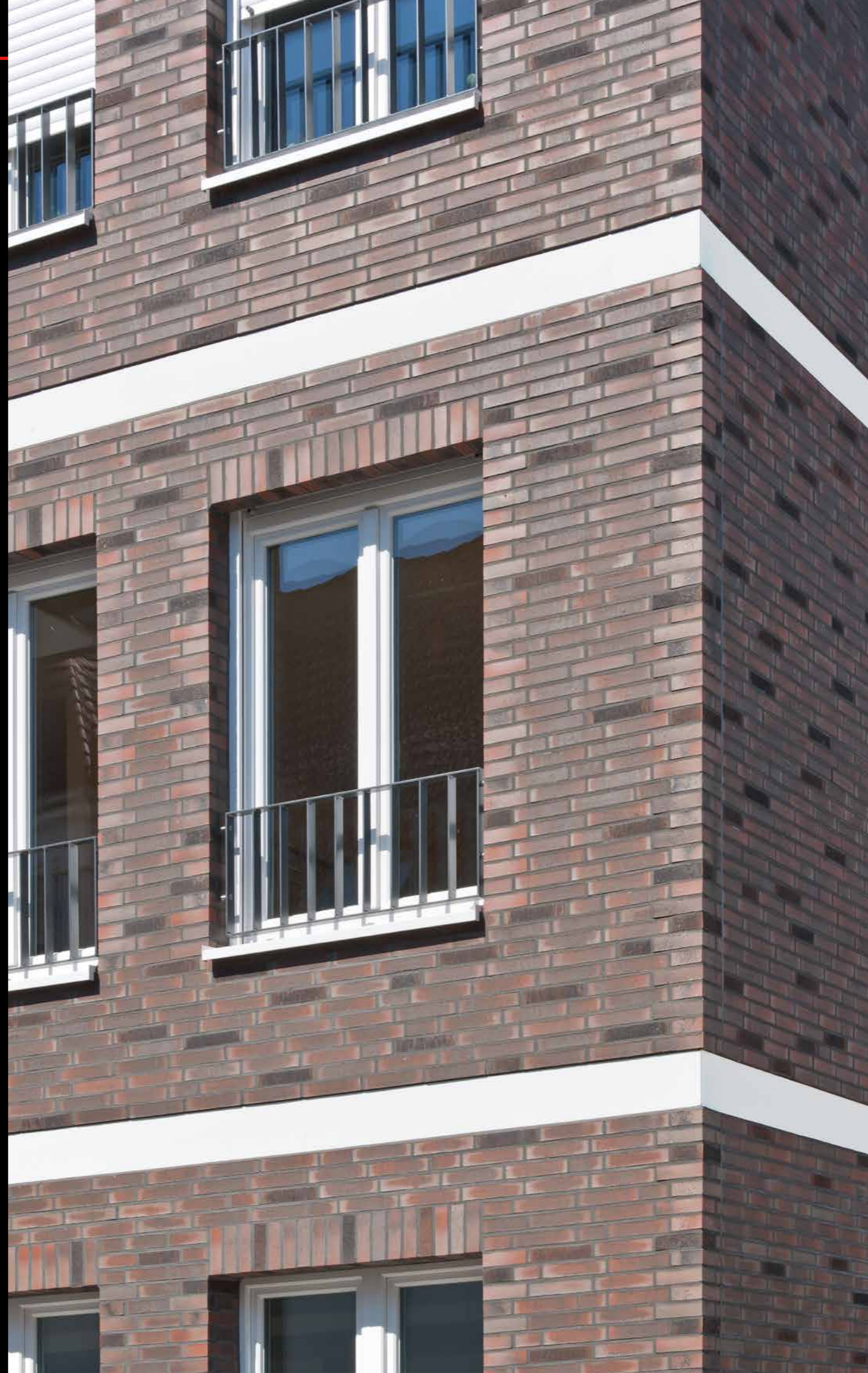


R 581 NF

R 580 NF



MIX



R 882 DF



R 882 NF

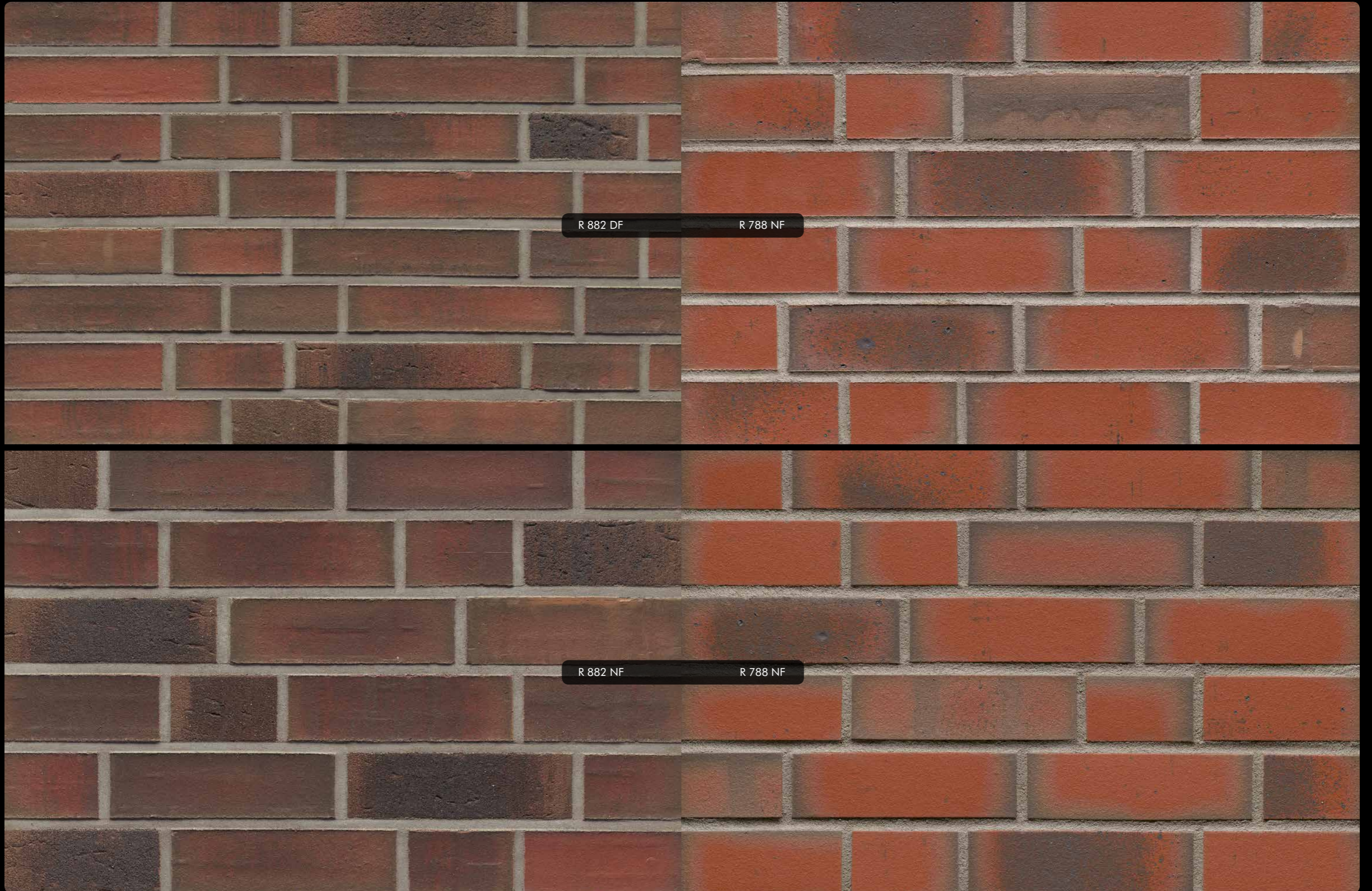


R 788 NF



R 788 NF

Die Abbildungen zeigen unverbindliche Durchschnittsmuster.  
The images show non-binding average samples.



R 882 DF

R 788 NF

R 882 NF

R 788 NF



# DATEN UND FAKTEN

FACTS AND FIGURES

140 MITARBEITER EMPLOYEES



2.500 ARTIKEL PRODUCTS

-  KLINKERRIEMCHEN  
THIN BRICKS
-  VERBLENDKLINKER  
FACING BRICKS
-  PFLASTERKLINKER  
CLAY PAVERS

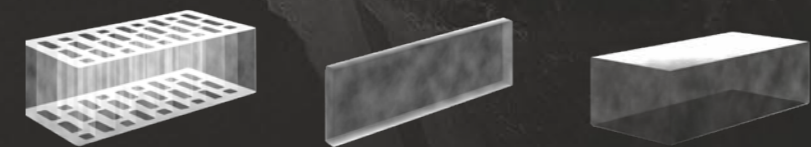
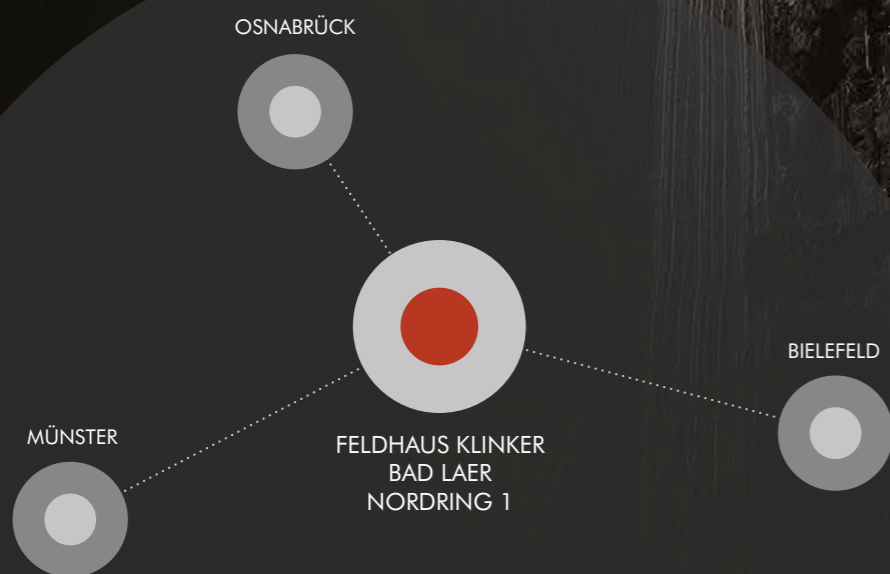


\*1857

ÄLTESTES KLINKERWERK DEUTSCHLANDS  
FAMILIENGEFÜHRT IN DER 4. UND 5. GENERATION  
BETRIEBSGELÄNDE CA. 17 HA  
ÜBERDACHTE PRODUKTIONSFLÄCHE CA. 6 HA  
GERMANY'S OLDEST BRICK FACTORY  
FAMILY-OWNED IN THE 4TH AND 5TH GENERATION  
FACTORY PREMISES APPROX. 17 HA  
PRODUCTION AREA INDOOR APPROX. 6 HA

ÜBER 40 LÄNDER  
WELTWEITE VERMARKTUNG

MORE THAN 40 COUNTRIES  
SALES WORLDWIDE



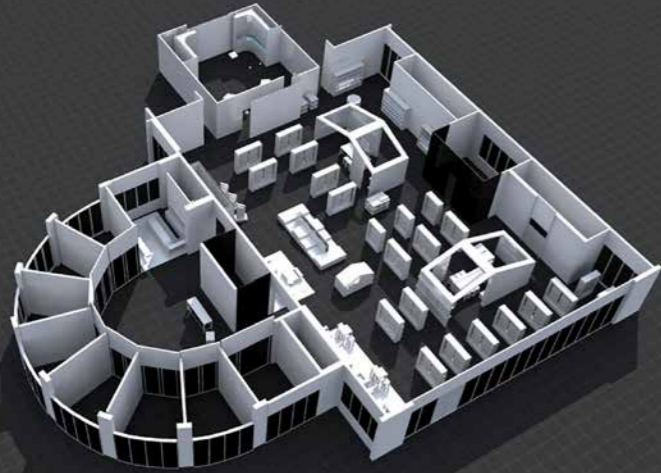
115 MILLIONEN

KLINKERRIEMCHEN, VERBLENDKLINKER UND PFLASTERKLINKER IM JAHR.  
PRODUKTION VON TÄGLICH CA. 360 T GEBRANNTEM MATERIAL

115 MILLION

BRICK SLIPS, FACING BRICKS AND CLAY PAVERS PER YEAR.  
DAILY PRODUCTION APPROX. 360 T FIRED RAW MATERIAL

# SHOWROOM



2.500 EXPONATE EXHIBITS  
SHOWROOM 1.400 QM SQM

EINE DER GRÖSSTEN AUSSTELLUNGEN DER BRANCHE –  
AUCH ERGÄNZENDE BAUSTOFFE.  
ONE OF THE LARGEST EXHIBITIONS OF THE INDUSTRY –  
ALSO COMPLEMENTARY MATERIALS.



## FACHBERATUNG SPECIALIST COUNSELING

IHR ANSPRECHPARTNER  
MAIK LANDWEHR  
+49 (0)5424 2920-0  
YOUR CONTACT PERSON  
MAIK LANDWEHR  
+49 (0)5424 2920-0



## FACHVERANSTALTUNGEN & HAUSMESSEN WORKSHOPS & IN-HOUSE-EXHIBITIONS



## CREATIVE LOUNGE - KONFIGURATOR CUSTOMIZER



9 BIS 18 UHR  
9 AM TO 6 PM

MONTAG BIS FREITAG GEÖFFNET  
SOWIE SAMSTAG VON 9 BIS 13 UHR.  
TERMINRESERVIERUNG FÜR BERATUNG:  
+49 (0)5424 2920-0  
MONDAY TO FRIDAY OPEN  
AND SATURDAY FROM 9 AM TO 1 PM.  
DATE RESERVATION FOR DETAILED ADVICE:  
+49 (0)5424 2920-0



FELDHAUS KLINKER VERTRIEBS-GMBH  
Nordring 1 · 49196 Bad Laer  
Telefon +49 (0)5424 2920-0 · Telefax +49 (0)5424 2920-129  
[www.feldhaus-klinker.de](http://www.feldhaus-klinker.de) · [info@feldhaus-klinker.de](mailto:info@feldhaus-klinker.de)